



# Ctrl+Alt

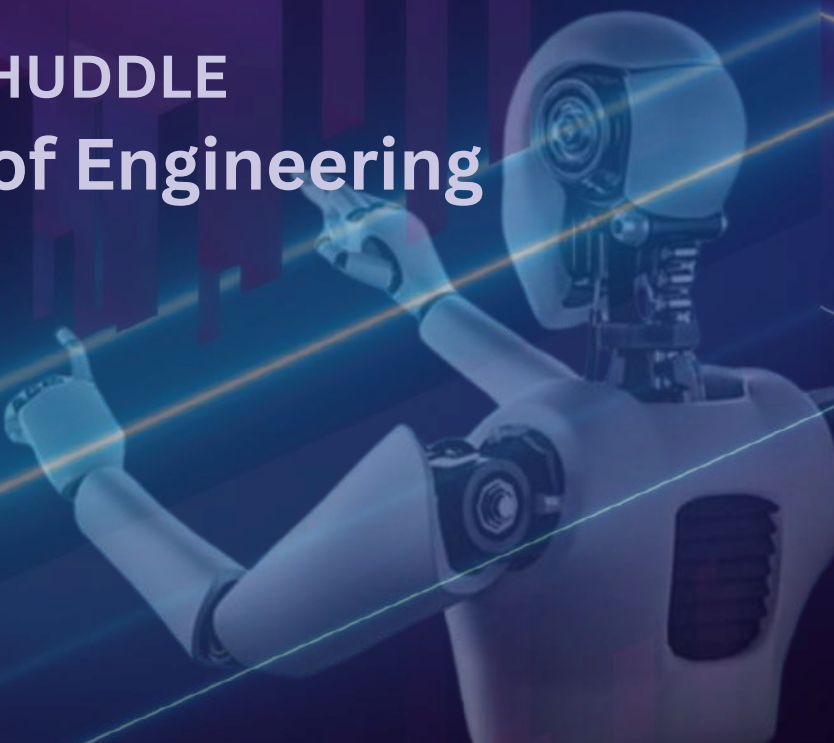
# +COMPETE



08<sup>th</sup> June '25  
8am-8pm



DTL HUDDLE  
RV College of Engineering





# RV COLLEGE OF ENGINEERING



Established in 1963 with three engineering branches—Civil, Mechanical, and Electrical—RVCE now offers 14 Undergraduate Engineering programs, 16 Master’s programs, and Doctoral studies. Located 13 km from the heart of Bangalore, the 16.85-acre campus provides an ideal learning environment for developing skilled and disciplined engineers.

Recognized among the top ten self-financing engineering institutions in India, RVCE has an annual student intake of over 1,400 for undergraduate and postgraduate programs. With a highly qualified faculty, the institute conducts cutting-edge research and development for industries and defense establishments.







# DEPARTMENT OF ELECTRONICS & TELECOMMUNICATION



The Department of Electronics and Telecommunication Engineering (Telecommunication Engineering) was established in the year 1992. It offers one UG programme – B E in Electronics & Telecommunication Engineering, one PG programme – M.Tech in Digital Communication Engineering ,Ph.D , M.Sc(Engg) by Research program affiliated to VTU. The curriculum is designed to provide a hands-on approach to design, build and demonstrate fundamentals, concepts and design of hardware, software, Embedded Systems, networks and protocols. The department focuses on four core specializations namely Wireless Communication, Signal processing, VLSI & Embedded Systems, Microwave communication and Networking. The UG and PG programmes create graduates with good level of competency to compete with other streams and offers a wide choice of career opportunities in industry, R&D and academia.





# IETE RVCE CHAPTER



The Institution of Electronics and Telecommunication Engineers (IETE) RVCE is a dynamic student chapter dedicated to fostering innovation and excellence in electronics, communication, and allied fields. Through hackathons, workshops, technical talks, and hands-on projects, IETE RVCE enhances students' skills and bridges the gap between academia and industry.







# IEEE SPS CHAPTER



The IEEE Signal Processing Society (SPS) RVCE is committed to advancing signal processing, machine learning, and AI. As part of the globally recognized IEEE SPS community, it provides students with opportunities to explore cutting-edge technologies through hackathons, technical workshops, research initiatives, and industry collaborations.





# Themes

AI and Data Science for Sustainable Solutions

IoT and Embedded Systems in Smart Environments

5G/6G Communication

Signal Processing in Telecommunication

Robotics and Automation for Smarter Operations

Innovative Projects for Social Relevance

## Faculty Conveyors

Dr. Nagamani K.  
Professor and HOD (ETE)  
[nagamanik@rvce.edu.in](mailto:nagamanik@rvce.edu.in)

Dr. Bhagya R  
Associate Professor (ETE)  
Faculty Advisor (IETE)  
[bhagyar@rvce.edu.in](mailto:bhagyar@rvce.edu.in)

Dr. K. Saraswathi  
Associate Professor (ETE)  
Faculty Advisor (IEEE-SPS)  
[ksaraswathi@rvce.edu.in](mailto:ksaraswathi@rvce.edu.in)







# EMPOWERING INNOVATION FOR A SUSTAINABLE FUTURE

- ▶ **Drives Purposeful Innovation:** Aligns with SDGs to encourage tech solutions that address real-world social and environmental challenges.
- ▶ **Promotes Inclusive Growth (SDG 9 & 11):** Supports smart infrastructure, sustainable communities, and equitable access to technology.
- ▶ **Empowers through Education (SDG 4):** Fosters experiential learning and skill-building through hands-on tech development.
- ▶ **Enables Scalable Impact:** Inspires participants to build solutions that are sustainable, future-ready, and socially relevant.

## Faculty Conveyors

Dr. Nagamani K.  
Professor and HOD (ETE)  
nagamanik@rvce.edu.in

Dr. Bhagya R  
Associate Professor (ETE)  
Faculty Advisor (IETE)  
bhagyar@rvce.edu.in

Dr. K. Saraswathi  
Associate Professor (ETE)  
Faculty Advisor (IEEE-SPS)  
ksaraswathi@rvce.edu.in





# What to Expect?

## A ROLLERCOASTER OF INNOVATION –

Not your usual hackathon! Face unexpected challenges and solve real-world problems under pressure.

NOT JUST CODE, BUT STRATEGY  
Execution and adaptability will define the winners. Can you handle the heat?

## A HACKATHON WITH A VIBE

A 10-hour adrenaline rush combining innovation with an electrifying atmosphere!

## 5 ACTIVITY POINTS

5 Activity Points will be provide for RVCE students

## Faculty Conveyors

Dr. Nagamani K.  
Professor and HOD (ETE)  
nagamanik@rvce.edu.in

Dr. Bhagya R  
Associate Professor (ETE)  
Faculty Advisor (IETE)  
bhagyar@rvce.edu.in

Dr. K. Saraswathi  
Associate Professor (ETE)  
Faculty Advisor (IEEE-SPS)  
ksaraswathi@rvce.edu.in







# ELIGIBILITY FOR ACTIVITY POINTS

In alignment with AICTE guidelines and RVCE's emphasis on holistic student development, Ctrl+Alt+COMPETE incorporates a sustainability initiative as part of the activity point allocation process.

Only RVCE student participants will be eligible for AICTE activity points. To qualify, students must fulfill two requirements:

- Active participation in the hackathon event.
- Completion of a sapling plantation activity.

At the conclusion of the event, each eligible student will be provided with a sapling. Participants must plant the sapling and submit a photograph of the planted tree to the organizing team as proof of completion. This initiative reinforces environmental responsibility while promoting the spirit of innovation and community engagement.

## Faculty Conveyors

Dr. Nagamani K.  
Professor and HOD (ETE)  
nagamanik@rvce.edu.in

Dr. Bhagya R  
Associate Professor (ETE)  
Faculty Advisor (IETE)  
bhagyar@rvce.edu.in

Dr. K. Saraswathi  
Associate Professor (ETE)  
Faculty Advisor (IEEE-SPS)  
ksaraswathi@rvce.edu.in





## REGISTER NOW

### Registration Fees:

- IEEE/IETE Members – ₹350 + GST
- Non-IEEE/IETE Members – ₹450 + GST

### Who Can Participate?

- Open to all students across India
- Teams of 3–4 members

Last Date to Register: 2nd June, 2025

Scan the QR code or use link below to register!

[Link : https://forms.gle/qQLXwytD38wfE3MPA](https://forms.gle/qQLXwytD38wfE3MPA)

OR



## Faculty Conveyors

Dr. Nagamani K.  
Professor and HOD (ETE)  
nagamanik@rvce.edu.in

Dr. Bhagya R  
Associate Professor (ETE)  
Faculty Advisor (IETE)  
bhagyar@rvce.edu.in

Dr. K. Saraswathi  
Associate Professor (ETE)  
Faculty Advisor (IEEE-SPS)  
ksaraswathi@rvce.edu.in







# Student Co-ordinators



Vineet Raj  
Chair (IETE)

Ph: 9507949221

[vineetraj.ai23@rvce.edu.in](mailto:vineetraj.ai23@rvce.edu.in)



Shamanth Raj E  
Chair (IEEE-SPS)

Ph: 7338226793

[shamanthraje.et22@rvce.edu.in](mailto:shamanthraje.et22@rvce.edu.in)



Brahati Jorapur  
Secretary (IETE)



Akshatha N  
Treasurer (IETE)



M Barath  
Secretary (IEEE-SPS)



Sreesha K R  
Treasurer (IEEE-SPS)



Vijay Sudarshan B  
Head of Production Design (IETE)

